

Upper Township Middle School 2018-2019

County: Cape May
 District: Upper Township School District
 Principal: Mr. Jeff Leek
 525 PERRY RD PETERSBURG, NJ 08270
<https://www.upperschools.org>
 609-628-3500

Total students: **466**

- Economically Disadvantaged: **10.9%**
- Students with Disabilities: **9.9%**
- English Learners: **0.2%**
- Grades offered: **06-08**
- Student to Teacher Ratio: **10:1**
- Teacher Average Experience (years): **8.2**

CDS: 09-5340-030

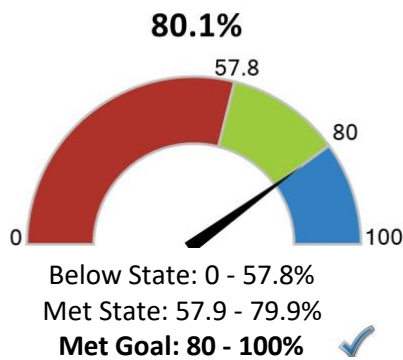
School Highlights Reported by the District

- Rigorous standards-based curricula including Honors Algebra 1, Advanced Physics, and Independent Studies.
- 1:1 MacBookAirs, Robotics, TV Media Studio and STEAM.
- Students participate in 25 different athletic teams, academic clubs, committees and councils, bands and choirs.

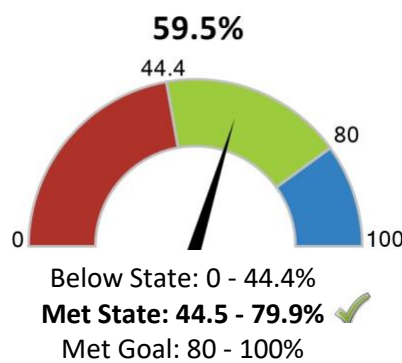
How did students perform on assessments?

Students that met or exceeded expectations on statewide assessments

English Language Arts



Math

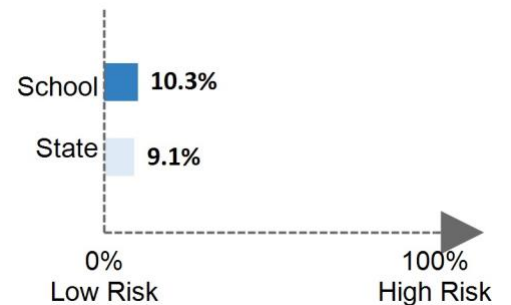


Are students at risk?

Students that were absent for 10% or more

of days enrolled

Chronic Absenteeism



How does student growth compare to other students?

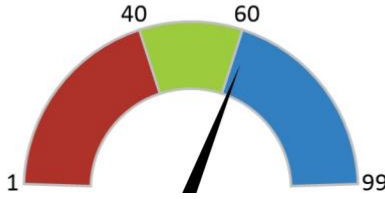
Median Student Growth Percentile

Each student gets a **student growth percentile** from 1 to 99 for English (4th to 8th grade) and Math (4th to 7th grade) that explains their progress compared to students who had similar test scores in the past.

If the student growth percentiles for all students in the school are ordered from smallest to largest, the **median student growth percentile** is the percentile in the middle of that list.

English Language Arts

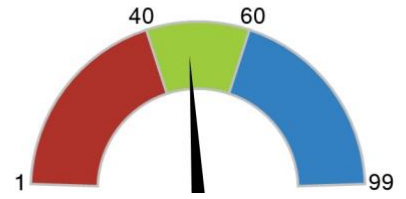
62



Below Standard: 1 - 39.5
Met Standard: 40 - 59.5
Exceeds Standard: 60 - 99 ✓

Math

48



Below Standard: 1 - 39.5
Met Standard: 40 - 59.5 ✓
Exceeds Standard: 60 - 99

How to use this report?

- 1 **Learn More** about this school by viewing the [detailed report](#) or by clicking any of the "🔍" icons on the page.
- 2 **Start Conversations** with school community members and ask questions. Use our [guides](#) for suggestions.
- 3 **Engage** with your school communities to identify where schools are doing well and where they can improve.



www.state.nj.us/education

www.njschooldata.org



reportcard@doe.nj.gov